

# Washington Avenue Intersection Study

**Study Overview:** The Washington Avenue Intersection Study will prepare planning level concept alternatives to address concerns related to operations and safety at Washington Avenue and the Frontage Road adjacent to Highway 36.

## The Study will:

- 

Develop alternatives to address existing safety concerns

---

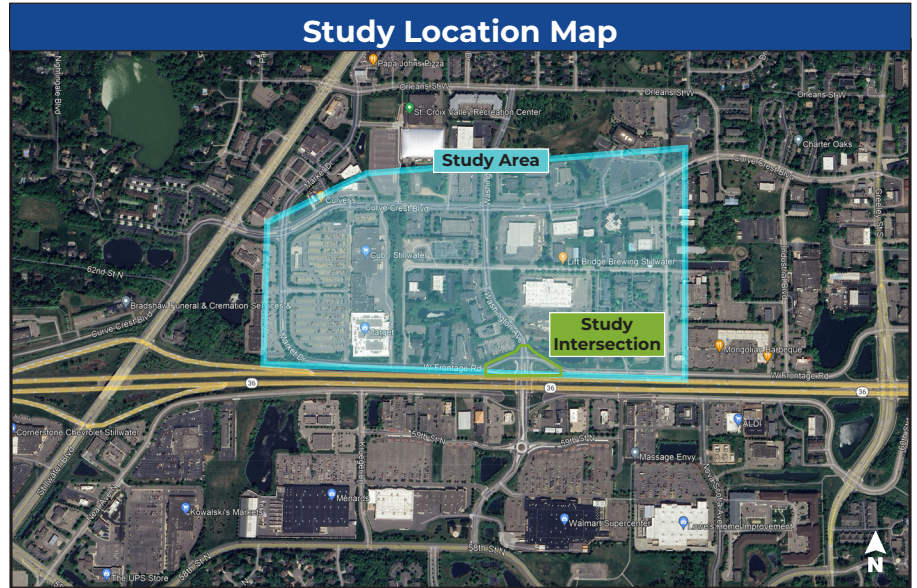
- 

Gather community feedback on potential improvements

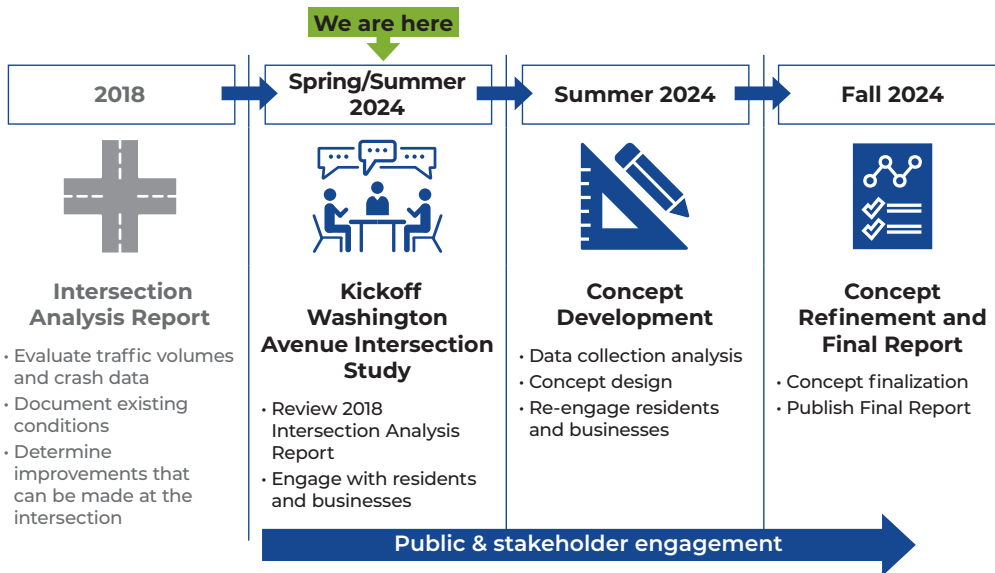
---

- 

Make the roadway safer for people who walk, bike and roll



## Study Schedule



Visit the study website:

<https://l.ead.me/washingtonavestudy>



SCAN ME

## Contact city staff:

**Shawn Sanders**  
 Public Works Director  
 (651) 430-8830  
 ssanders@stillwatermn.gov

**Jesse Farrell**  
 Deputy Director of Public Works  
 (651) 430-8749  
 jfarrell@stillwatermn.gov

